

NO.	CLASSIFICATION	OCCUPANCY	DESCRIPTION	WATER CLOSETS		LAVATORIES		BATH/TUBS/SHOWERS	DRINKING FOUNTAINS	OTHER
				MALE	FEMALE	MALE	FEMALE			
1	ASSEMBLY (807 OCCUPANTS)	A-1	THEATRE FOR THE PERFORMING ARTS	1 PER 125 REQUIRED 4 ACTUAL 4	1 PER 65 REQUIRED 7 ACTUAL 4	1 PER 200 REQUIRED 3 ACTUAL 3	1 PER 50 REQUIRED 3 ACTUAL 3	N/A	1 PER 500 REQUIRED 2 ACTUAL 2	1 SERVICE SINK REQUIRED 1 ACTUAL 1
3	EDUCATIONAL (750 STUDENTS 50 STAFF)	E	EDUCATIONAL FACILITIES	3 ADDITIONAL B.F. UNSEX REQUIRED 8 ACTUAL 10	1 PER 50 REQUIRED 8 ACTUAL 16	1 PER 50 REQUIRED 12 ACTUAL 12	1 PER 50 REQUIRED 8 ACTUAL 12	N/A	1 PER 100 REQUIRED 8 ACTUAL 8	1 SERVICE SINK REQUIRED 1 ACTUAL 4

LEGEND - CODE COMPLIANCE PLAN

	CONSTRUCTION: 8" CONCRETE MASONRY UNITS, 2" RIGID INSULATION & 4" FACE BRICK (14" TOTAL THICKNESS) U.L. DESIGN NO. U062 2 HOUR FIRE RESISTANCE RATING FROM FLOOR SLAB TIGHT TO ROOF DECK ABOVE WITH 90 MINUTE OPENING PROTECTIVES OR 8" CONCRETE MASONRY UNITS U.L. DESIGN NO. U065
	ONE HOUR FIRE RESISTANCE RATING FROM FLOOR SLAB TIGHT TO ROOF DECK ABOVE WITH OPENING PROTECTIVES OF 90 MINUTE FOR STAIRS OR HAZARDOUS ROOMS (SCIENCE ETC.) 45 MIN FOR STORAGE OR JANITORS CLOSETS IN UNSPRINKLERED BUILDINGS AND 20 MINUTES AT CORRIDORS IN UNSPRINKLERED BUILDINGS
	CONSTRUCTION: 8" CONCRETE MASONRY UNITS U.L. DESIGN NO. U065 OR, ONLY WHERE SHOWN ON DRAWINGS ONE LAYER 2" FIRE CODE GYPSUM BOARD EACH SIDE OF 3/8" x 20 GA. METAL STUDS @ 16" O.C. U.L. DESIGN NO. U065
	ONE HOUR FIRE RESISTANCE RATING (FOR CORRIDOR WALLS) WITH 20-MINUTE SELF-CLOSING OR SMOKE ACTIVATED LABEL DOORS. INSTALL FROM FLOOR SLAB TO UNDERSIDE OF ROOF DECK ABOVE. GLAZED OPENINGS ARE PERMITTED IF 34 HOUR RATED, PER NFPA 257 (U.L. 9). OPENING SHALL BE LESS THAN 25% OF THE CORRIDOR WALL.
	SMOKE TIGHT (NO FIRE RESISTANCE RATING) FROM FLOOR SLAB TIGHT TO ROOF DECK OR SOLO CEILING ABOVE WITH 1 3/4" SOLID CORE OR 1 1/4" GLASS OPENING PROTECTIVES
	CONSTRUCTION: 8" & 12" CONCRETE MASONRY UNITS
	BUILDING EXIT WITH EGRESS WIDTH
	OCCUPANT LOAD
	20 DENOTES FIRE RESISTANCE RATING OF OPENING PROTECTIVE (IN MINUTES)
	DENOTES PANIC HARDWARE DEVICE ON EACH DOOR LEAF
	FIRE EXTINGUISHER
	*ACCESSIBLE ROUTE ENTRANCE/EGRESS
	EGRESS WINDOW LOCATION

LIFE SAFETY NOTES

- CODE: NFPA 101; 2012 LIFE SAFETY CODE, AS AMENDED BY STATE FIRE MARSHAL 2015 MICHIGAN BUILDING CODE
- CONSTRUCTION TYPE: II (000)
HAZARD OF CONTENTS: ORDINARY HAZARD
- OCCUPANCY: EDUCATIONAL OCCUPANCY (SPACES SUBJECT TO "ASSEMBLY" OCCUPANCY NOTED ON PLAN)
- AREA & HEIGHT:
ALLOWABLE AREA: 80,000 SQ. FT. (REFER TO CALCULATIONS ON SHEET)
ALLOWABLE HEIGHT: 1-STORY
SMOKE COMPARTMENTS: MINIMUM OF 2 COMPARTMENTS, MAXIMUM OF 30,000 SQ. FT. EACH
- SEPARATION PROTECTION:
CORRIDORS SHALL BE SMOKE TIGHT.
FIRE AREAS SEPARATED BY 2-HR FIRE SEPARATION & 60-MIN. OPENING PROTECTIVES.
BOILER & FURNACE ROOMS, STORAGE AREAS, AND JANITOR CLOSETS: 1-HR RATED SEPARATION & OPENING PROTECTIVES WHERE REQUIRED.
- OCCUPANT LOAD: (BASED ON FOLLOWING - SEE PLAN)
ASSEMBLY (CONFERENCE, DINING, GYMNASIUM): 1/15 SF NET
BUSINESS: 1/100 SF GROSS
CLASSROOMS: 1/20 SF NET
KITCHENS: 1/100 SF GROSS
LIBRARIES (READING AREAS): 1/50 SF NET
LIBRARIES (STACK AREAS): 1/100 SF GROSS
LOCKERS: 1/7 SF NET, OR 1/15 SF GROSS INCLUDING SHOWERS, TOILETS & DRYING
MECHANICAL EQUIPMENT: 1/300 SF GROSS
SHOPS, LABS, VOC. ROOMS: 1/50 SF NET
STAGES: 1/15 SF NET
STORAGE: 1/200 SF GROSS
- EGRESS REQUIREMENTS:
A. 6'-0" MINIMUM CORRIDOR WIDTH (CORRIDOR CAPACITY = OCCUPANT LOAD/REQUIRED NUMBER OF EXITS)
B. EGRESS WIDTHS - 0.2' PER PERSON (LEVEL OR RAMPED)
C. 20' MAXIMUM TRAVEL DISTANCE
D. 2' DEAD-END MAXIMUM TRAVEL IN CORRIDOR
E. 75' MAXIMUM COMMON PATH OF TRAVEL
F. EXITS:
(1) 2 REMOTE EXITS REQUIRED FOR EDUCATIONAL SPACES >50 PEOPLE OR >1,000 SQ. FT. IN AREA
(2) MINIMUM NUMBER PER OCCUPANTS: 2 IF < 501, 3 IF > 501, 4 IF > 1,000
(3) WINDOWS FOR RESCUE REQUIRED IN BUILDINGS NOT PROTECTED BY AUTOMATIC SPRINKLER SYSTEM
(4) PANIC HARDWARE AT AREAS >100 OCCUPANT LOAD IF DOOR PROTECTED WITH LATCH OR LOCK
(5) DISCHARGE: ALL EXITS SHALL TERMINATE AT A PUBLIC WAY OR AN EXTERIOR EXIT DISCHARGE
G. HORIZONTAL EXITS:
(1) SUBSTITUTED FOR NO MORE THAN ONE-HALF OF REQUIRED EXITS
(2) FIRE BARRIERS SEPARATING BUILDING AREAS WITH HORIZONTAL EXITS BETWEEN SHALL BE 2-HOUR RATED
(3) WHERE SERVING BOTH SIDES OF FIRE BARRIER ADJACENT OPENINGS REQUIRED WITH DOORS SWINGING IN OPPOSITE DIRECTIONS
H. DOORS:
(1) MINIMUM CLEAR WIDTH SHALL BE 32"
(2) SIDE HINGED
(3) SWING IN DIRECTION OF TRAVEL WHERE OCCUPANT LOAD IS > 50
(4) SELF-CLOSING OR AUTOMATIC CLOSING IN FIRE BARRIERS AND HORIZONTAL EXITS
I. INTERIOR FINISH:
A. EXITS - CLASS A
B. ALL OTHER - CLASS A OR B
C. INTERIOR WALL & CEILING FINISH IF LESS THAN 10% OF AGGREGATE WALL & CEILING AREAS OF ANY ROOM MAY BE CLASS C
J. OTHER PROVISIONS:
BUILDING CONSTRUCTION - MICHIGAN BUILDING CODE 2015
ELECTRICAL - 2017 NFPA 70 (NEC) AS AMENDED BY MICHIGAN PART 8 RULES
MECHANICAL - MICHIGAN MECHANICAL CODE 2015
PLUMBING - MICHIGAN PLUMBING CODE 2015
FIRE ALARM SYSTEM - NFPA 72 & 72
FIRE EXTINGUISHERS - NFPA 10
FIRE SPRINKLERS - NFPA 13
K. FIRESTOPPING REQUIREMENT
ALL OPENINGS AROUND MECHANICAL, PLUMBING, ELECTRICAL, AND STRUCTURAL PENETRATIONS THRU A FIRE RESISTIVE RATED ASSEMBLY (INCLUDING FLOORS) SHALL BE SEALED WITH FIRE RATED FIRESTOPPING IN COMPLIANCE WITH ASTM E814 AND EQUIVALENT TO THE RATING REQUIRED. PENETRATIONS THRU SMOKE RESISTIVE NON-FIRE RATED ROOM WALLS SHALL BE SEALED SMOKE TIGHT

Construction 6/1/22 - 8/22/22

Construction 9/7/22 - 10/3/22

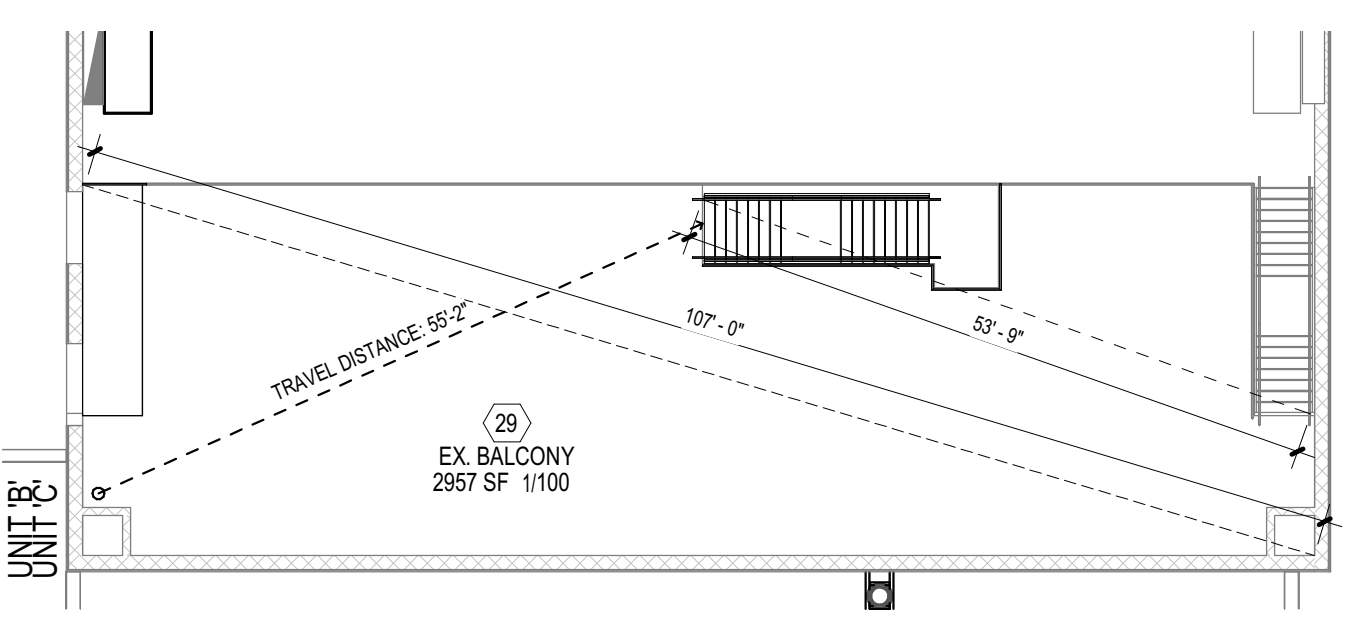
Construction 10/4/22 - 10/31/22

Construction 11/1/22 - 11/30/22

Construction 12/1/22 - 12/29/22

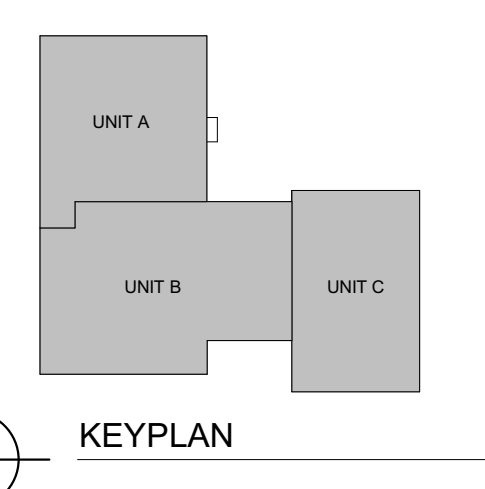
Construction 3/28/22 - 6/1/22

2 Floater Classrooms fall 22' = Final Teachers move in Christmas break



UNIT 'C' GYM BALCONY CODE COMPLIANCE PLAN
1/16" = 1'-0"

CODE COMPLIANCE PLAN
1/16" = 1'-0"



ISSUANCES
11.04.2021 BIDS & CONSTRUCTION

DRAWN JAJ
REVIEWED JAJ

PROJECT NO. 5-5311

No part of this drawing may be used or reproduced in any form or by any means, or stored in a database or retrieval system, without prior written permission of GMB Copyright © 2021 All Rights Reserved

CODE COMPLIANCE PLANS

G1.01